

**KHSAA TITLE IX
ANNUAL REPORT SUBMISSION
STATUS REPORT
2008-2009**

KHSAA
Form T65
Revised 4/09

OK

TO: KHSAA Member School Superintendents, Principals, and Athletic Directors

FROM: Brigid L. DeVries, Commissioner
Darren Bilberry, Assistant Commissioner

DATE: May 29, 2009

School	Shelby Valley High School	Martha Mullins	
--------	---------------------------	----------------	--

The following is a status report regarding the required 2008 - 2009 Title IX Annual Report submission of forms due into the KHSAA office by April 15, 2009. Appropriate KHSAA Audit Team personnel have reviewed these forms and the following is a summary of this review.

I. Checklist of Forms properly submitted in a satisfactory manner:

X	GE 19 (Annual Verification)	X	T-35 (Budget Expenses)
X	T-1 (Summary Program Chart 1)	X	T-36 (Budget Expenses)
X	T-2 (Summary Program Chart 2)		T-41 (Checklist – Overall Interscholastic Program)
X	T-3 (Summary Program Chart 3)	X	T-60 (Corrective Action Plan)
X	T-4 (Summary Program Chart 4)	N/A	T-63 (Interscholastic Survey Results)

II. Status

A.		2008 – 2009 Forms are satisfactory and no further information or action is necessary at this time.
B.	X	Errors have been noted with respect to the following forms T-41—Corrected copy attached. Please place in the school's Title IX file.
C.		The following forms were omitted and must be submitted by school representatives:
D.	X	According to the 2008-2009 data, the school appears to be meeting the standards established in: <input checked="" type="checkbox"/> Test 1 (Athletic participation is proportionate to enrollment) <input type="checkbox"/> Test 2 (History and continuing practice of program expansion) <input type="checkbox"/> Test 3 (Full and effective accommodation of interests and abilities)
E.	X	Other Recommendations and Comments: The KHSAA continues to recommend a meeting of the Gender Equity Review Committee be held in each sports season, i.e. Fall, Winter, and Spring. A meeting should be held in the Fall season in the next academic year. <i>Probably because</i> The average expenditure per male athlete was \$555; per female athlete, \$352. The difference was \$203. The KHSAA guideline is to project an allowance of \$100 per male athlete for schools with football. The over-expenditure for boys' sports is a continuing issue. The construction of a softball complex should relieve the imbalance; however school personnel need to analyze expenditures in day-to-day operations to find ways to further address the over-expenditure. In the area of AWARDS, the amount spent per male athlete was \$17; for female athletes, \$6. Please forward a copy of the athletics department's policy on awards and forms of recognition, i.e. banquets. If the policy does not have a way of guaranteeing that athletes of both genders are recognized in an equitable manner, the policy should be revised. Place the issue of inequitable spending on a revised Corrective Action Plan (Form T-60) and forward to the KHSAA office by June 15, 2009.

*of RBE
Team
Dismissed
be placed
6/19
OK*

2008-2009 KHSAA TITLE IX ATHLETICS AUDIT

KHSAA
Form T41
Rev. 12/08

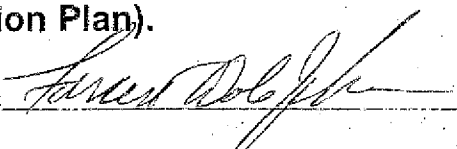
Checklist - Overall Interscholastic Athletics Program

DIRECTIONS:

For the Areas of Compliance (Opportunities and Benefits) listed on the left hand side of the page, place a checkmark under the appropriate column identifying whether your school provided an advantage to the Girls' Program, or to the Boys' Program or to Neither Program. A review of T-35 and T-36 spending patterns might be helpful in completing this form.

Areas of Compliance:	ADVANTAGE TO:		
	GIRLS' PROGRAM	BOYS' PROGRAM	NEITHER PROGRAM
OPPORTUNITIES			
Accommodation of Interest and Abilities			✓
BENEFITS			
Equipment and Supplies			✓
Scheduling of Games and Practice Time			✓
Travel and Per Diem Allowances			✓
Coaching			✓
Locker Rooms, Practice and Competitive Facilities		✓	
Medical and Training Facilities and Services			✓
Publicity		X	X
Support Services		AWARDS	✓
Athletic Scholarships			✓
Tutoring			✓
Any meals provided for home			N/A

If an advantage is shown, corrective action should be shown on T-60 (Corrective Action Plan).

Principal's Signature:  Date: 4-8-09



**KENTUCKY HIGH SCHOOL ATHLETIC ASSOCIATION
2008-2009 ANNUAL VERIFICATION OF TITLE IX PROCEDURES**

KHSAA Form GE19
P:Forms/GE19
Rev.12/08

(To be submitted by April 15, 2009 along with other required forms)

The Shelby Valley High School, Pikeville, Kentucky APR 10 2009
(Name of High School) (City)

certifies to the Kentucky High School Athletic Association that the following is an accurate and true representation of the facts surrounding compliance with 20 U.S.C. Sections 1681-1688, et. Seq. (also known as Title IX)

I certify the following provisions in accordance with records at the school contained in the permanent Title IX file, at least one copy of which must be maintained in the Principal's office, and to the best of my knowledge have completed the following tasks.

Established a gender equity committee at the high school. (List committee personnel and provide attachment if necessary)

Name	Address	Phone	Title
(Supt., Principal, Student, Parent, Coach, Etc.)			
Connie Compton		(606) 639-0033	A.D./A.R.
James R. Johnson		(606) 639-0033	Principal
Woodward Mallie		(606) 639-0033	Coach (Volleyball/Judo)
Larry Justice II		(606) 639-0033	Coach/CC
Jason Bohan		(606) 639-0033	Asst. Principal/Coach
Rodney Rowe		(606) 639-0033	Coach (Boys' Basketball)
Amanda Sawyer		(606) 639-0033	Student Athlete
Amita Johnson		(606) 639-0033	Parent

Scheduled a minimum of three meetings during the 2008-2009 school year on the following dates:

August 7, 2008
January 14, 2009
June 1, 2009

Designated the following person(s) as the Title IX coordinator for the school:

Name	Title	Address	Phone
Connie Compton	A.D./A.R.	125 Douglas Pk, Pikeville, KY	(606) 639-0033

Designated the following person(s) as the Title IX coordinator for the district:

Name	Title	Address	Phone
Ancie Casey	County A.D.	P.O. Box 3097, P. Owensboro, KY	(606) 433-9200

School personnel are continuing to make periodic reviews of the boys' and girls' athletics program reflected in the Corrective Action Plan.

In addition to the above information, the above referenced school maintains a complete permanent file relative to Title IX records including copies of the self-assessment audit, all corrective action plans, and other related materials.

James Dale Johnson
Principal's Signature Date 4-8-2009

Roger Wagner
Superintendent Signature Betty D. Dancy
School Board Chairperson's Signature

(Send original copy to KHSAA - Maintain duplicate in Title IX school folder)

Gender Equity Committee

Angie Banks	(606) 639-0033	Coach
Kevin Saunders	(606) 639-0033	Coach
Michael Tackett	(606) 639-0033	Coach
Jan Boole	(606) 432-1497	Coach

2008-2009
ACCOMMODATION OF INTERESTS AND ABILITIES
SUMMARY PROGRAM CHART 1

KHSAA
 Form T1
 Rev.12/08

Participation Opportunities Test One

		(Column 1)	(Column 2)	(Column 3)	(Column 4)
	Program	Enrollment	Percentage of Total Enrollment	Number of Interscholastic Participants (double and triple count)	Percentage of Total Participation
Row 1	GIRLS	267	45%	174	47%
Row 2	BOYS	323	55%	200	53%
Row 3	Totals	590	100%	374	100%

Instructions:

*Number of 8th grade students & below used in Column 3 and Column 4 calculations : 18

- 1) Determine the total number of girls enrolled, (place in Row 1, Column 1). Determine the total number of boys enrolled, (place in Row 2, Column 1).
- 2) Add the total number of girls and boys enrolled to determine total enrollment, (place in Row 3, Column 1).
- 3) Calculate the percentage of total enrollment that is female. (Divide Row 1, Column 1 by Row 3, Column 1 and place in Row 1, Column 2.) Calculate the percentage of total enrollment that is male. (Divide Row 2, Column 1 by Row 3, Column 1 and place in Row 2, Column 2.) Note: Row 1, Column 2 plus Row 2, Column 2 should total 100%.
- 4) Ask coaches to confirm the names of those individuals who are on the team as of the first **date of regular season competition**, and cross out the names of those who were cut from the team or quit the team prior to the first regular season competitive event. Determine the total number of interscholastic athletics participants that are girls, (and place in Row 1, Column 3). In order to determine the total number of athletics participants, an individual should be counted each time he or she participates on a team. For example, if Jane Doe competes on the varsity volleyball team, the junior varsity volleyball team, the junior varsity basketball team, and the varsity softball team, she should be counted as four participants (**do not include club or intramural sports participants, cheerleaders, dance teams, or pom squads**). Calculate the same way for boys and girls. * In addition, should 8th grade students and below play on a Freshman, Junior Varsity, or Varsity team, they should also be counted for each team and sport on which they participate. If applicable, please asterisk in the above notation as to how many 8th grade students & below are included in the totals.
 Using the same procedure, determine the total number of interscholastic athletic participants that are boys, (and place in Row 2, Column 3). Add Row 1, Column 3 plus Row 2, Column 3 to get total participants and place in Row 3, Column 3.
- 5) Calculate the percentage of female participation. (Row 1, Column 3 divided by Row 3, Column 3 and place in Row 1, Column 4.) Calculate the percentage of male participation. (Row 2, Column 3 divided by Row 3, Column 3 and place in Row 2, Column 4.) Note: Row 1, Column 4 plus Row 2, Column 4 should total 100%.

Note: While being within three percent is not a formal compliance standard; if the percent listed in Row 1, Column 4 is within 3% of Row 1, Column 2, then it provides a good target within which compliance is likely.

Principal's Signature: _____

Date: 4-8-09

Copyright 1999, Good Sports, Inc., Title IX and Gender Equity Specialists. All rights reserved.

2008-2009
ACCOMMODATION OF INTERESTS AND ABILITIES
SUMMARY PROGRAM CHART T-2

KHSAA
Form T2
Rev. 12/08

Participation Opportunities Test Two

		Column 1	Column 2	Column 3	Column 4	Column 5
Program		Number of Teams Currently Offered	Number of Participants	Number of Teams Added Since the beginning of the 2004-2005 School Year	Number of participants for the 2008-09 school year who are playing on teams added since the 2004-05 school year	Percent of Total Participation By Sex Added Since the beginning of the 2004-2005 School Year
GIRLS	Row 1	varsity:	6	104	0	N/A
	Row 2	j.v.:	4	54	0	N/A
	Row 3	frosh:	2	16	0	N/A
	Row 4	total:	12	174	0	N/A
BOYS	Row 5	varsity:	7	116	0	N/A
	Row 6	j.v.:	4	68	0	N/A
	Row 7	frosh:	1	16	0	N/A
	Row 8	total:	12	200	0	N/A

- 1) For Column 1, list the number of interscholastic teams offered for girls and boys at each competitive level (varsity, junior varsity, and freshman). For girls, total each of the entries in Rows 1, 2, and 3 into Row 4. For boys, total Rows 5, 6, and 7 into Row 8.
- 2) For Column 2, list the number of participants at each level. For girls, total each of the entries in Rows 1, 2, and 3 into Row 4. For boys, total Rows 5, 6, and 7 into Row 8. **Note:** The totals in Row 4 for girls and in Row 8 for boys must be the same as the totals in Form T-1, Column 3, Rows 1 and 2 respectively.
- 3) For Column 3, list the number of interscholastic teams that have been added in the last five years at each competitive level. Count each team added during the 5 year period only one time. e.g. Girl's junior varsity soccer was added 3 years ago, count the team only once, not 3 times. For girls, total the entries in Rows 1, 2, and 3 into Row 4. For boys, total Rows 5, 6, and 7 into Row 8.
- 4) For Column 4, list the number of participants that are **currently** on each level of the teams that were added in the last five years. If a team was added previously but no longer exists, there are no current participants to be added for that team. For girls, total the entries in Rows 1, 2, and 3 into Row 4. For boys, total Rows 5, 6, and 7 into Row 8.
- 5) For Column 5, calculate the percentage of participants that have been added in the last five years. For girls, take the number in Column 4, Row 4 and divide by the number in Column 2, Row 4. For boys, take the number in Column 4, Row 8 and divide it by the number in Column 2, Row 8.

Note: If the percentage of current participants added in the last five years is 25% or greater, compliance with Test Two may be possible. If less than 25%, then compliance with Test Three should be analyzed. **CAUTION:** 25% is not a formal compliance standard.

Principal's Signature: _____

Date: _____

2008-2009
ACCOMMODATION OF INTERESTS AND ABILITIES
SUMMARY PROGRAM CHART T-3

KHSAA
 Form T3
 Rev. 12/08

Participation Opportunities Test Three

FOR ANY QUESTION ANSWERED "YES" IDENTIFY THE RESPECTIVE SPORT(S).

	GIRLS (Yes / No)		BOYS (Yes / No)
1. For a sport <u>not</u> currently offered in your interscholastic athletics program, is there sufficient interest to form a viable interscholastic team based on participation on an <u>intramural team</u> .	No		NO
2 For a sport <u>not</u> currently offered, is there sufficient interest, based on the responses to your most recent Student Interest Survey, to form a viable <u>interscholastic team</u> for a sport not currently offered. If yes, what sport?	yes (Bowling)		yes (Bowling)
3. For a sport currently offered at the junior varsity or freshman level is there sufficient interest, based on your most recent Student Interest Survey, to form a <u>varsity team</u> not currently offered?	NO		NO
4. For a sport currently offered at the varsity level only, is there sufficient interest, based on your most recent Student Interest Survey, to form a viable team for a <u>junior varsity or freshman team</u> that is not currently offered?	NO		NO
5. If you answered YES to question (1), (2), (3), or (4), are there enough high schools in the geographic area offering the sport (at the appropriate level) to allow for the development of a reasonable schedule of competition?	NO		NO

Plans to Address Interest:

Principal's Signature : *Forrest Deffen* Date: 4-8-09



**2008-2009
ACCOMODATION OF INTERESTS AND ABILITIES
SUMMARY PROGRAM CHART T-4**

KHSAA
Form T4
F:Form T4
Rev.12/08

Levels of Competition Test One

		Column 1	Column 2	Column 3
Girls	Team Levels	Number of Teams Currently Offered	Number of Participants	Percentage of Participants at Each Level
Row 1	varsity:	6	104	60
Row 2	j.v.:	4	54	31
Row 3	frosh:	2	16	9
Row 4	total:		174	100%
Boys				
Row 5	varsity:	7	116	58
Row 6	j.v.:	4	68	34
Row 7	frosh:	1	16	8
Row 8	total:		200	100%

- 1) Column 1, list the number of interscholastic teams offered for girls and boys at each competitive level; varsity, junior varsity, and freshman. (Refer to Form T-2, Accommodation of Interests and Abilities, Summary Program Chart 2, Column 1.)
- 2) For Column 2, list the number of participants at each level. For girls, total the entries in Rows 1, 2, and 3 into Row 4. For boys, total the entries in Rows 5, 6, and 7 into Row 8. (Refer to Form T-2, Accommodation of Interests and Abilities, Summary Program Chart 2, Column 2.)
- 3) For Column 3, calculate the percentage of female and male participants at each level.
 For girls' varsity, junior varsity, and frosh, respectively:
 Divide Column 2, Row 1 by Column 2, Row 4, and place the percentage in Column 3, Row 1
 Divide Column 2, Row 2 by Column 2, Row 4, and place the percentage in Column 3, Row 2.
 Divide Column 2, Row 3 by Column 2, Row 4, and place the percentage in Column 3, Row 3.

 For boys' varsity, junior varsity, and frosh, respectively:
 Divide Column 2, Row 5 by Column 2, Row 8, and place the percentage in Column 3, Row 5.
 Divide Column 2, Row 6 by Column 2, Row 8, and place the percentage in Column 3, Row 6.
 Divide Column 2, Row 7 by Column 2, Row 8, and place the percentage in Column 3, Row 7.

Principal's Signature: *Frank Wolfgram* Date: 4-8-09

**2008-2009
ACTUAL EXPENDITURES - PROGRAM COMPARISON CHART 1
TO INCLUDE BOOSTER CLUB FUNDING**

	equipment and supplies		travel		awards		coaches' salaries (to include supplemental and extended employment; dollar amount required)		facilities improvements		publications (if sport-specific)	
	Expenditures		Expenditures		Expenditures		Expenditures		Expenditures		Expenditures	
	School	Booster	School	Booster	School	Booster	School	Booster	School	Booster	School	Booster
G basketball	8,000	3,000	1000	0	600	300	18,000	0	6600	0	0	500
B basketball	8,000	2,000	900	7000	0	1000	18,000	0	6600	0	0	500
G softball	4,000	0	3000	0	0	0	2,500	0	60	0	0	0
B baseball	3,600	0	1,050	0	325	0	2,500	0	0	0	0	0
G cross country	200	0	850	0	0	0	300	0	0	0	0	0
B cross country	200	0	900	0	0	0	300	0	0	0	0	0
G golf												
B golf	450	0	0	0	0	0	600	0	0	0	0	0
G soccer	220	0	300	0	0	0	0	0	0	0	0	0
B soccer	220	0	300	0	0	0	0	0	0	0	0	0
G swimming												
B swimming												

38000
44000
21560
17475
1350
1400
1050
520
520

16/ATH 252
17/ATH 7590
travel
G = 5,930
B = 4,916
G = 1,085
B = 3,340
awards
4,425

1. Total expenditures on T-35 and T-36 on the 2008-2009 year report due by April 15, 2009, should reflect the total monies spent (rounded off to nearest dollar) for the entire school year of 2007-2008 ending June 30, 2008.
2. Booster Club Funding/Contributions must be included in the above expenditures total. (Note: It is illegal for coaches to be paid by Booster Clubs - Reference KHSAA Bylaw 27)

Principal's Signature: Forrest Dale Johnson Date: 4-8-09

**2008-2009
ACTUAL EXPENDITURES - PROGRAM COMPARISON CHART 2
TO INCLUDE BOOSTER CLUB FUNDING**

	equipment and supplies		travel		awards		coaches' salaries (to include supplemental and extended employment; dollar amount required)		facilities improvements		publications (if sport-specific)	
	School	Booster	School	Booster	School	Booster	School	# of Coaches for all levels / # of Teams for all levels	School	Booster	School	Booster
G track	225	0 ^v	380	0	35 ^v	0	500 ^v	3 1	0	0	0	0
B track	225	0 ^v	380	0	15 ^v	0	500 ^v	3 1	0	0	0	0
G tennis												
B tennis												
G volleyball	2400	0	400	0	150 ^v	0	1500	3 3	6600	0	0	0
B wrestling												
G (list sport)												
B football	18,000	10,000	486	200	0	2000 ^v	18,000	2 2	0	5000	0	1800
G (list sport)												
B (list sport)												

440
1140
11050
55,486

1. Total expenditures on T-35 and T-36 on the 2008-2009 year report due by April 15, 2009, should reflect the total monies spent (rounded off to nearest dollar) for the entire school year of 2007-2008 ending June 30, 2008.

2. Booster Club Funding/Contributions must be included in the above expenditures totals. Indicate percentage of total expenditures for each gender: (if disparities are obvious, list on your Corrective Action Plan (T-60) what action you will take to correct the problem).

#	Gender	Expenditures	Percentage
200	Boys	\$110,450	64%
174	Girls	\$61,278	36%
Total:		\$171,728	100%

Principal's Signature: Tommy Dale Date: 4-8-09

2008-2009 KHSAA TITLE IX ATHLETICS AUDIT

KHSAA
Form T41
Rev. 12/08

Checklist - Overall Interscholastic Athletics Program

DIRECTIONS:

For the Areas of Compliance (Opportunities and Benefits) listed on the left hand side of the page, place a checkmark under the appropriate column identifying whether your school provided an advantage to the Girls' Program, or to the Boys' Program or to Neither Program. A review of T-35 and T-36 spending patterns might be helpful in completing this form.

Areas of Compliance:	ADVANTAGE TO:		
	GIRLS' PROGRAM	BOYS' PROGRAM	NEITHER PROGRAM
OPPORTUNITIES			
Accommodation of Interest and Abilities			✓
BENEFITS			
Equipment and Supplies			✓
Scheduling of Games and Practice Time			✓
Travel and Per Diem Allowances			✓
Coaching			✓
Locker Rooms, Practice and Competitive Facilities		✓	
Medical and Training Facilities and Services			✓
Publicity		X	X
Support Services		AWARDS	✓
Athletic Scholarships			✓
Tutoring			✓
Any meals provided for home			N/A

If an advantage is shown, corrective action should be shown on T-60 (Corrective Action Plan).

Principal's Signature: _____

Date: _____

2008-2009

TITLE IX

CORRECTIVE ACTION PLAN

SCHOOL NAME

Shelby Valley

DIRECTIONS:

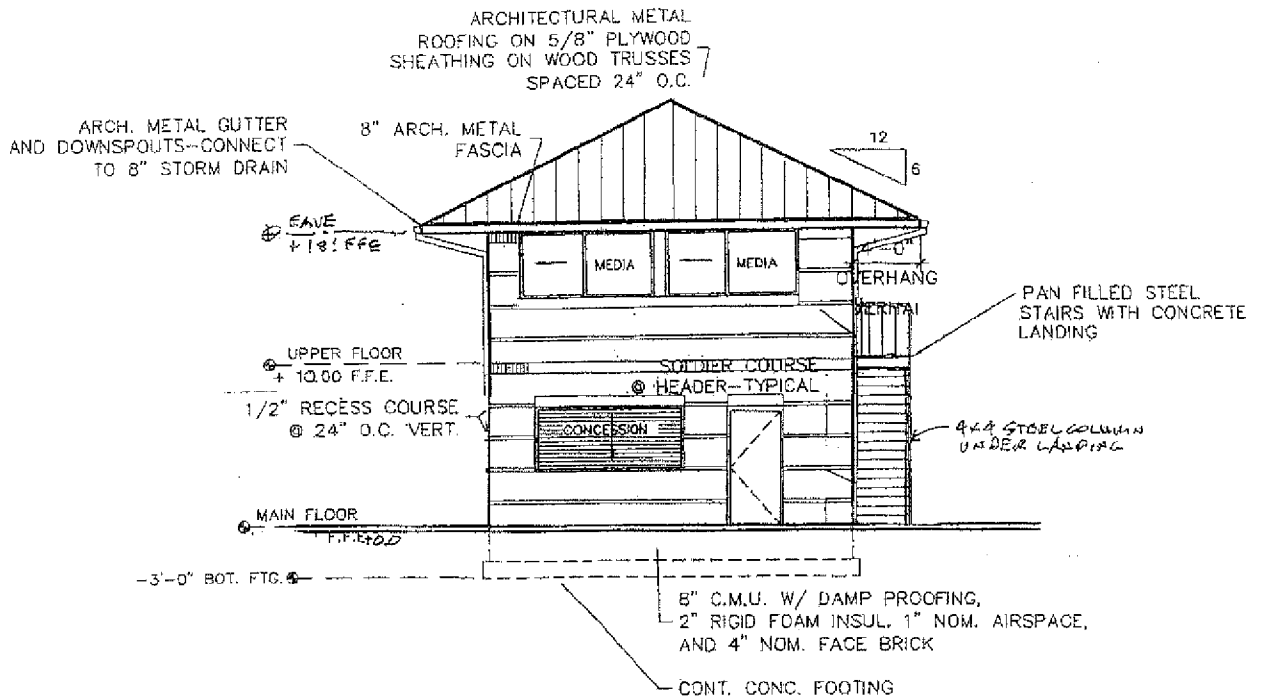
1. For Column 1, indicate the intended area (Opportunities or Benefits) which needs corrective action in order to achieve gender equity. For Column 2, write the suggested change or activities that will correct the area in need of alteration. For Column 3, include the estimated completion date for the changes or activities.
2. It is possible to attain compliance with Title IX and no longer need "corrective" action. However, the KHSAA strongly encourages compliant schools to identify items for improvement (Column 1), activities to accomplish the improvement (Column 2) and a timetable for completion (Column 3) that will strengthen the athletic program.
3. You may copy this form as needed. Please attach corrective action plans along with audit forms and submit by April 15, 2009.

COLUMN 1 ITEM FOR CORRECTION/ IMPROVEMENT	COLUMN 2 SUGGESTED CHANGE/ ACTIVITIES	COLUMN 3 SCHOOL YEAR, COMPLETION DATE OF CORRECTION FOR PROJECT
<i>Softball Complex</i>	<i>See attachment.</i>	<i>2009 - 2010</i>

Principal's Signature: *James Daley*

Date: *4-8-09*

1. The replacement, construction and installation of two foul poles
2. The construction of a two story building to include a concession stand, handicapped male and female restrooms, a scorer's/media area, and a storage area for softball
3. The installation of 20-24 lockers to be installed in the room presently being utilized by the softball program for a locker room
4. The construction and installation of a drainage system for the softball infield and the re-installation of brick dust on the infield
5. The construction and installation of a drainage system for the softball outfield including grading and re-seeding the outfield
6. The addition of two sets of bleachers in order to double the seating capacity for the softball program
7. Remodel the present dugouts and replace the present fencing on the dugouts with blocks. The front of the dugouts will be constructed approximately three blocks high with a block cap and fencing will be placed from the top of the blocks to the ceiling in order to prevent any any any possibility of a line drive injuring a player.

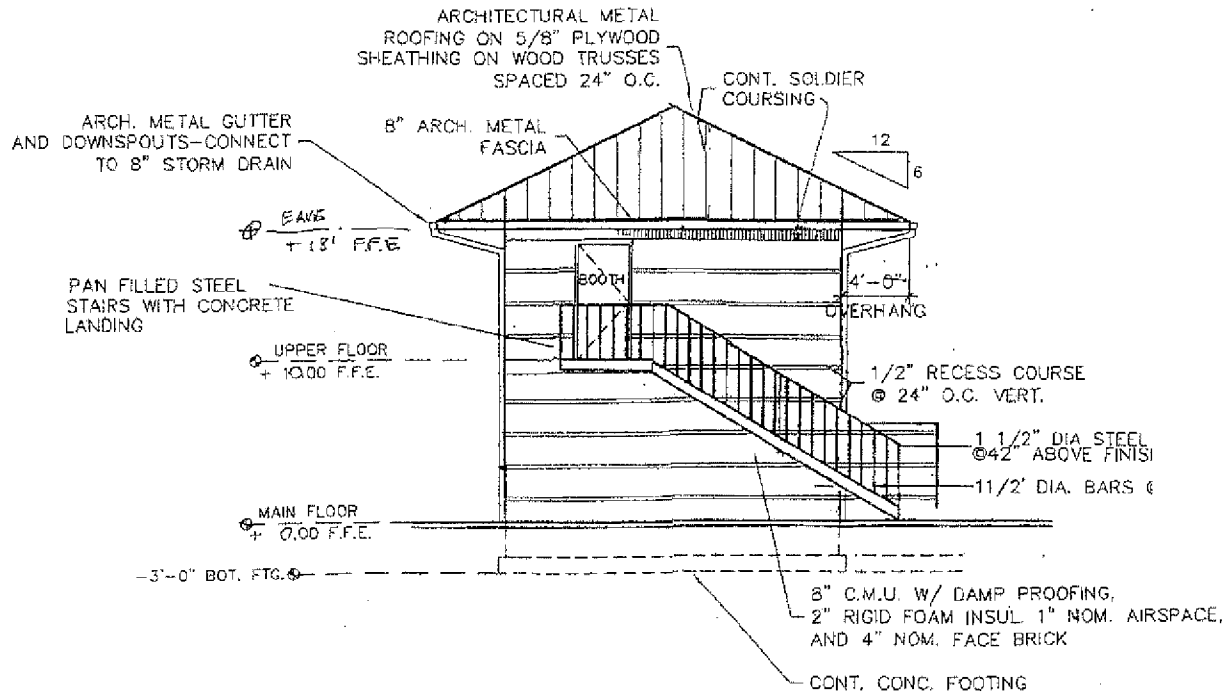


SOUTHWEST ELEVATION

1/8" = 1'-0"

*SALCOBY VALLEY HIGH SCHOOL
GIRLS SOFTBALL
CONCESSION STAND & BOOTH*

**RICHARDSON
ASSOCIATES
ARCHITECTS PSC**
726 HWY 2034
WHITESBURG, KY 41859
E-MAIL: r.associates@earthlink.net

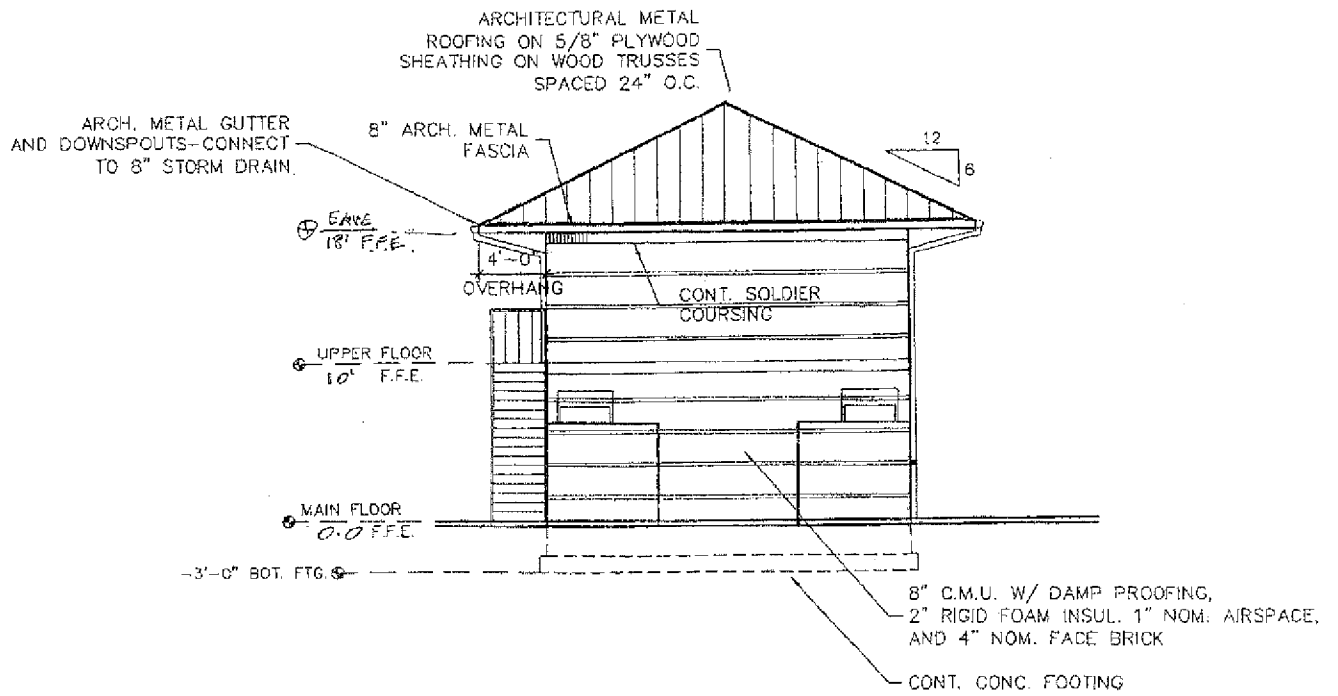


SOUTHEAST ELEVATION

1/8" = 1'-0"

Sideling Valley High School
Girls Soft Ball
Concession Stand & Booth

**RICHARDSON
ASSOCIATES
ARCHITECTS PSC**
728 HWY 2034
WHITESBURG, KY 41858
E-MAIL: r.assoc@bellsouth.net



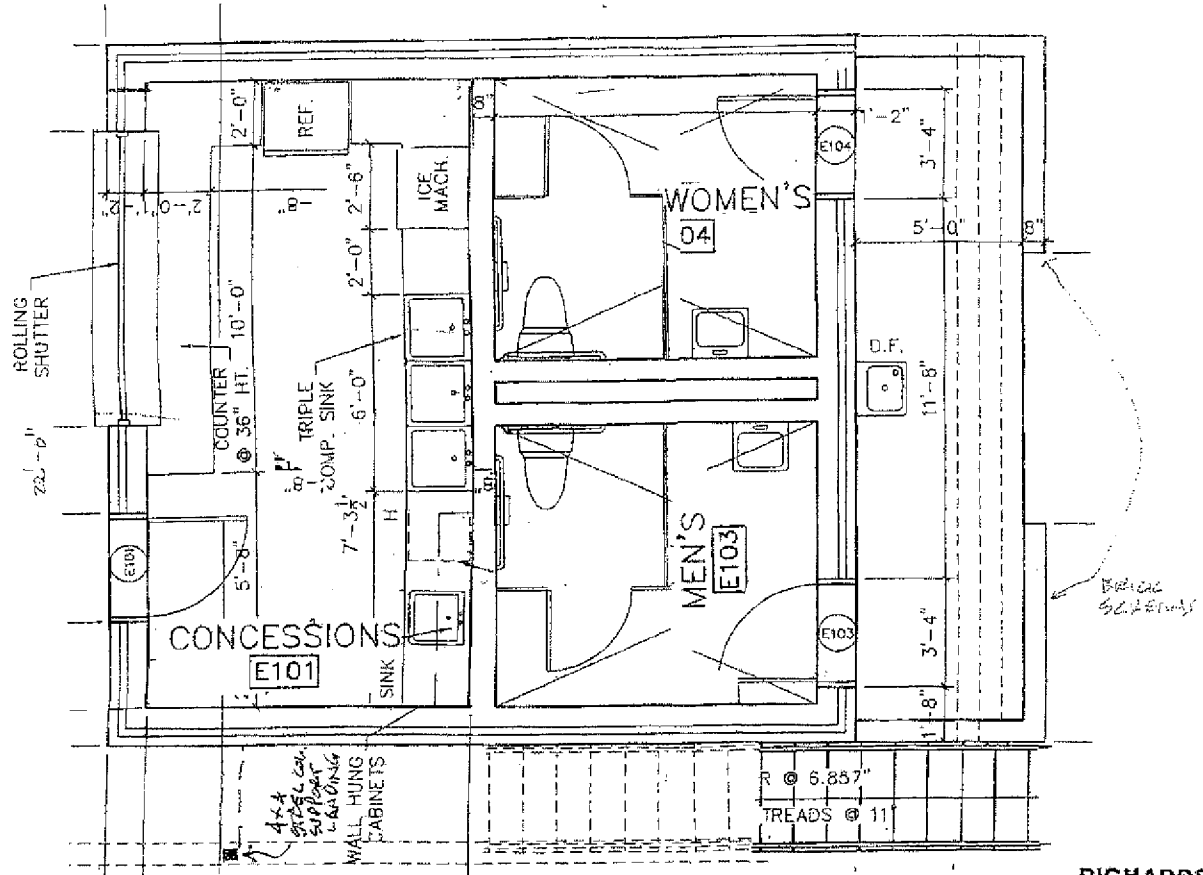
NORTHEAST ELEVATION

1/8" = 1'-0"

*Sullivan Valley High School
Girls Soft Ball
Concession Stand & Booth*

**RICHARDSON
ASSOCIATES
ARCHITECTS PSC**
726 HWY 2034
WHITESBURG, KY 41858
E-MAIL: r.assoc@bellsouth.net

22'-4"

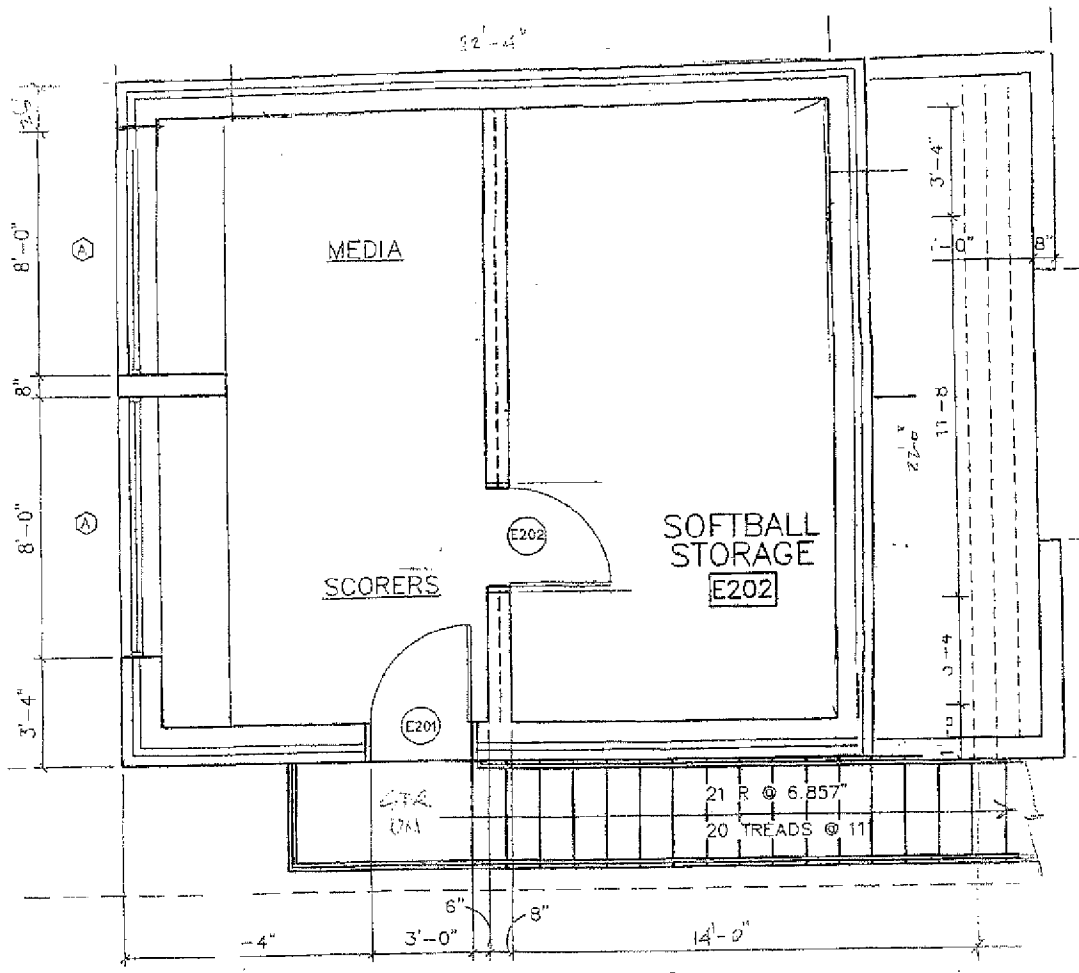


SHELBY VALLEY HIGH SCHOOL
 GIRLS SOFTBALL
 CONCESSION STAND & RESTROOM

MAIN FLOOR PLAN

1/4" = 1'-0"

**RICHARDSON
 ASSOCIATES
 ARCHITECTS PSC**
 726 HWY 2034
 WHITESBURG, KY 42858
 E-MAIL: r_assoc@bellsouth.net



SOLEM VALLEY HIGH SCHOOL
 GIRLS SOFTBALL
 CONCESSION STAND & BOOTH

UPPER FLOOR PLAN
 1/4" = 1'-0"

**RICHARDSON
 ASSOCIATES
 ARCHITECTS PSC**
 726 HWY 2034
 WHITESBURG, KY 41858
 E-MAIL: r.associ@bellsouth.net

KHSAA
Form 160
Rev. 12/08

2008-2009

TITLE IX

CORRECTIVE ACTION PLAN

SCHOOL NAME

Shelby Valley

DIRECTIONS:

1. For Column 1, indicate the intended area (Opportunities or Benefits) which needs corrective action in order to achieve gender equity. For Column 2, write the suggested change or activities that will correct the area in need of alteration. For Column 3, include the estimated completion date for the changes or activities.
2. It is possible to attain compliance with Title IX and no longer need "corrective" action. However, the KHSAA strongly encourages compliant schools to identify items for improvement (Column 1), activities to accomplish the improvement (Column 2) and a timetable for completion (Column 3) that will strengthen the athletic program.
3. You may copy this form as needed. Please attach corrective action plans along with audit forms and submit by April 15, 2009.

COLUMN 1 ITEM FOR CORRECTION/ IMPROVEMENT	COLUMN 2 SUGGESTED CHANGE/ ACTIVITIES	COLUMN 3 SCHOOL YEAR, COMPLETION DATE OF CORRECTION FOR PROJECT
Awards forms of recognition	The school plans to have two teachers award a year who all sports will be honored and rewarded.	09-10

Date: 6-4-09

Principal's Signature: *James Dale*

June 4, 2009

Kentucky High School Athletic Association
2280 Executive Drive
Lexington, Kentucky 40505

Commissioner Brigid DeVries:

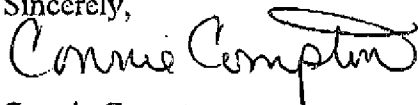
We, at Shelby Valley High School, are working hard to bring all of our programs to the next level. We, at present do not have a written awards policy but we are in the process of developing one. It is important that we develop a fair and equitable one.

At Shelby Valley, we have decided to have ^{Fall / Spring} two banquets a year in order to honor all sports. In the past, we have primarily left it to the Boosters' Clubs, and at first it worked, but now we find that some sports are growing at a faster pace than others and the school must now take over in order to insure equability. So, beginning this year, we plan to develop our own awards program that will honor all sports' teams at this school.

Discussed by phone, to include individual awards, 6/9/09
With the proposed new softball complex, and the planned banquets and awards' programs, we feel that our program will continue to grow at a more equitable pace.

Thank you for your time and consideration.

Sincerely,



Connie Compton
Athletic Director
Shelby Valley High School

KHSAA STAFF

Brigid DeVries, Commissioner bdevries@khsaa.org
Michael Barren, Assistant Commissioner mbarren@khsaa.org
Darren Bilberry, Assistant Commissioner dbilberry@khsaa.org
Butch Cope, Assistant Commissioner bcope@khsaa.org
Julian Tackett, Assistant Commissioner jtackett@khsaa.org
Elden May, Sports Information Director emay@khsaa.org
Darlene Koszenski, Office Manager/Admin. Asst. darlenek@khsaa.org
Marsha Day, Admin. Support Specialist mday@khsaa.org
Cheryl Goodwin, Admin. Support Specialist cgoodwin@khsaa.org
Fay Isaacs, Admin. Support Specialist fisaacs@khsaa.org
Martlyn Mitchell, Admin. Support Specialist mmitchell@khsaa.org
Phyllis Sallee, Admin. Support Specialist psallee@khsaa.org
John Ginn, Physical Plant Director jginn@khsaa.org
Brent Miller, Administrative Intern bmiller@khsaa.org



Kentucky High School Athletic Association
2280 Executive Drive
Lexington, KY 40505
Phone: (859) 299-5472 • Fax: (859) 293-5999
www.khsaa.org
(a Kentucky.com affiliate)

SPORTS FAX COVER SHEET

TO: CONNIE COMPTON	FROM: MARTHA MULLINS
SCHOOL/COMPANY: SHREVEY VALLEY	DATE: 4/9/09
FAX NUMBER: 606-432-3321	TOTAL PAGES(inc. cover):
PHONE NUMBER: 606-639-0033	RE: AWARDS POLICIES

2008-2009 KHSAA STATE CHAMPIONSHIPS

Oct. 6-8	Leachman Buick/GMC-KHSAA Girls' Golf	Bowling Green Country Club
Oct. 9-11	Leachman Buick/GMC-KHSAA Boys' Golf	Bowling Green Country Club
Oct. 31-Nov. 1	Girls' Volleyball	Bellamine Knights Hall, Louisville
Nov. 5-6, 8	Boys' & Girls' Soccer	Toyota Stadium, Georgetown
Nov. 15	Boys' & Girls' Cross Country	Ky. Horse Park, Lexington
Dec. 12-13	Football	Papa John's Cardinal Stadium, Louisville
Feb. 13-14	Pannell Swim Shop/KHSAA Swimming	U of L Ralph Wright Natatorium, Louisville
Feb. 19-21	Wrestling	Frankfort Convention Center, Frankfort
March 11-14	Houchens/KHSAA Girls' Basketball	WKU Diddle Arena, Bowling Green
March 18-21	National City/KHSAA Boys' Basketball	Rupp Arena, Lexington
May 21-23	Boys' & Girls' Tennis	UK Boone/Downing Complex, Lexington
May 22-23	Boys' & Girls' Track	U of L Owsley Frazier Park, Louisville
June 5-6	Fast Pitch Softball	Jack Fisher Park, Owensboro
June 11-13	Forcht Bank/KHSAA Baseball	Applebee's Park, Lexington

NOTES:

*Good to talk w/ you this morning.
I found this in the "file" hand-out. Hope it helps you w/ your project.*

CONFIDENTIAL: Please keep in mind the information herein is confidential and should be delivered at its earliest convenience to the person whose name is listed above.

E-2) BUSY NO FACSIMILE CONNECTION

REASON FOR ERROR
-1) HANG UP OR LINE FAIL
-2) NO ANSWER
-5) MAIL SIZE OVER

0731 MEMORY TX : 03 : 6064323321 OK 2/2


TRANSMITTED/STORED : JUN. 9. 2009 9:19AM
FILE MODE OPTION ADDRESS RESULT PAGE

FAX HEADER 1: KHSAA
FAX HEADER 2: KY High School Athletic Assoc.

* * * COMMUNICATION RESULT REPORT (JUN. 9. 2009 9:20AM) * * *

*Mrs. Compton - please note what all policies
or awards included - hope this is helpful -
Best wishes - M. Mullin*

Publicity

- 
- A. Assign cheerleading squad(s), dance team, and bands on an equitable basis to both boys' and girls' athletic events. If your school has two cheerleading squads, equitably rotate the two squads between male teams and female teams. If your school has one cheerleading squad, assign them an equal number of games for the boys' team and the girls' team.
 - B. Publish seasonal media guides that honor all athletic teams, male and female, for that season.
 - C. Contact local media including newspapers, radio and TV stations and explain the need for equitable coverage.
 - D. Opt for group pictures when possible. For example, photograph the boys' and girls' soccer teams together.
 - E. Schedule pep assemblies and rallies that support teams of both genders.
 - F. Develop and adhere to a written policy that specifies how awards for athletics are earned.
 - G. Provide comparable banquets to honor athletes. Consider having one seasonal banquet for all sports during that season - or a banquet for like sports such as boys' soccer and girls' soccer.
 - H. Ensure that the school and community are aware of efforts and accomplishments to achieve the intent and spirit of Title IX through reports to various groups such as the school council, PTSA and local media.
 - I. Ensure that the school web site for athletics equitably promotes male and female teams
 - J. Adhere to a written policy for the display of banners, pictures, awards and trophies located in the gymnasium, trophy cases and throughout the school.

Support Services

- A. Provide office space for all coaches and keep a written copy of the assignments with the Title IX documents.
- B. Structure joint-fund raising activities that benefit both a male team and a female team. For example, the boys' basketball team and the girls' basketball team engage in an activity and share the funds collected.
- C. Maintain written agreements with all booster clubs that clearly define the role of the group and its relationship to the school and the school's administration.
- D. Ensure appropriate administrative oversight of booster activities occurs and that there are written procedures for athletic director/principal/school board approval for fund raising and expenditures that benefit all teams.
- E. Calculate and monitor the amount of money spent per male athlete as compared with the amount of money spent per female athlete.
- F. Consider establishing one booster club that supports all teams. Or, one booster club for like sports such as boys' basketball and girls' basketball.
- G. Meet with booster clubs and other community groups or in some manner provide information to all interested parties that clearly delineate your school's commitment to equitable funding of athletics for boys and athletics for girls.

Tutoring

- A. Encourage an attitude among athletes that academics come first and provide an appropriate environment for receiving additional instructional services for both male and female athletes.